

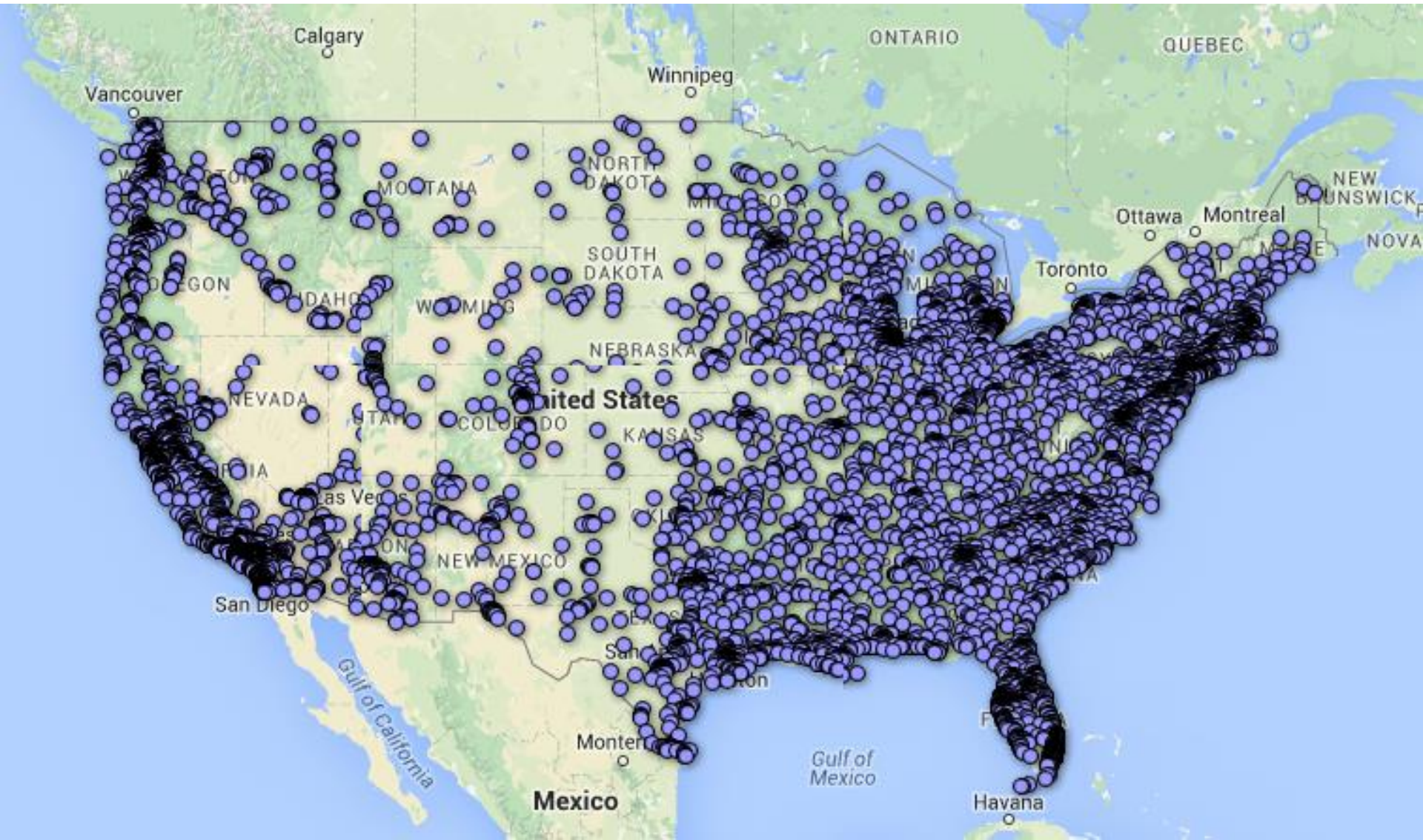


JTA'S MOBILITY CORRIDORS PROGRAM

Groundwork Jacksonville

February 29, 2016
5:30-7:30P





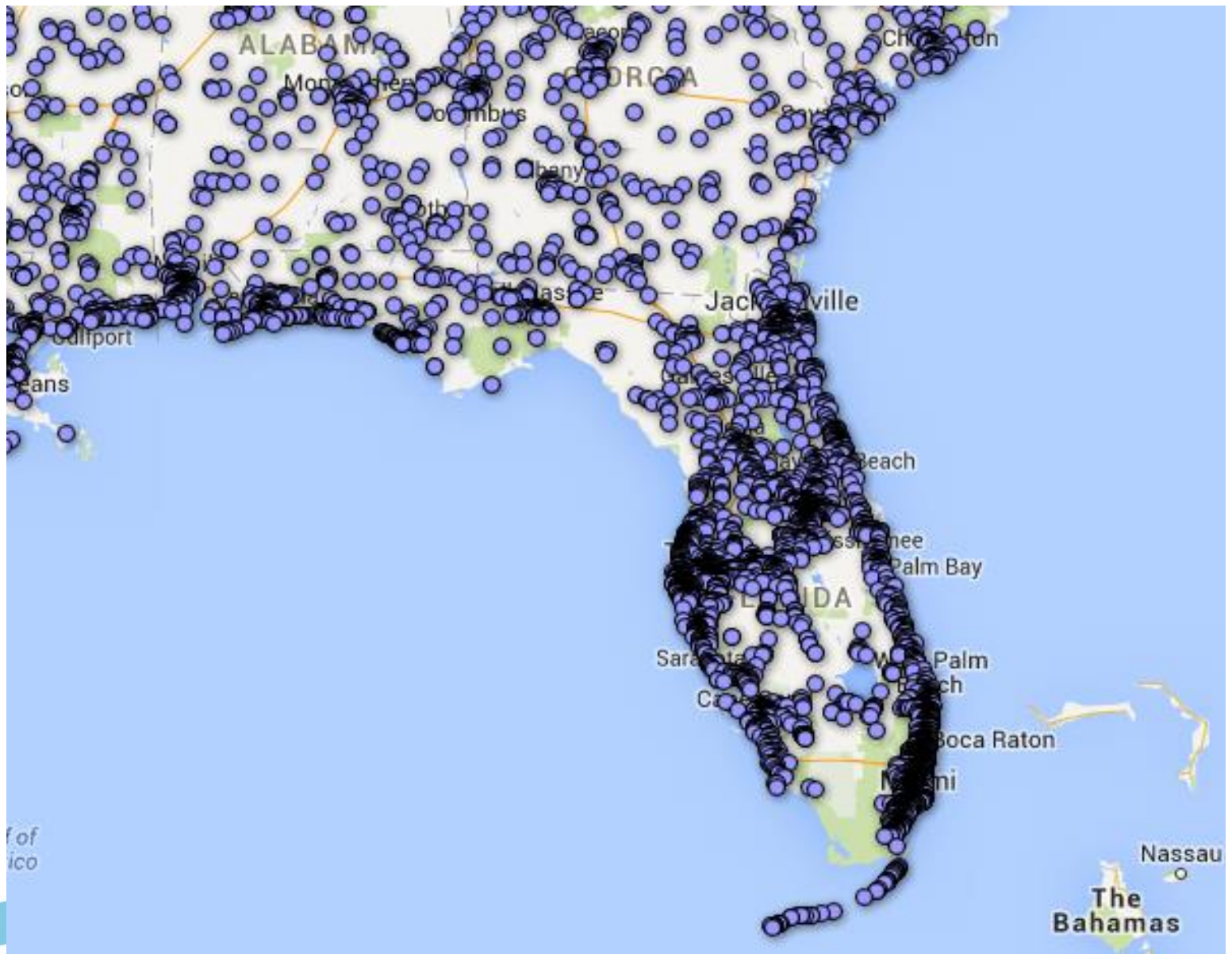
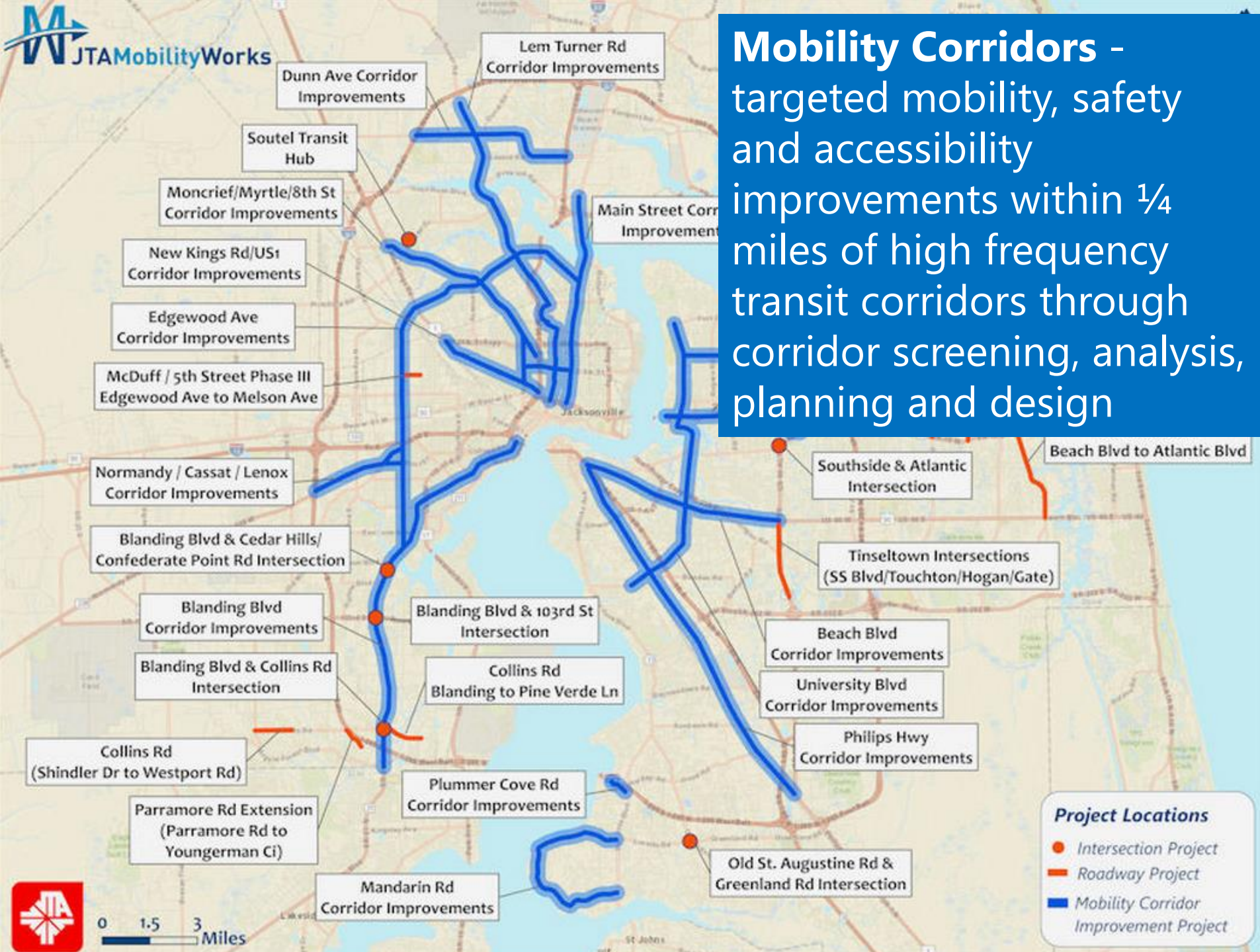


TABLE 1

Large metro areas, ranked by Pedestrian Danger Index

Rank	Metropolitan area	Total pedestrian deaths (2003–2012)	Annual pedestrian deaths per 100,000 (2008–2012)	Percent of people commuting by foot (2008–2012)	Pedestrian Danger Index (2008–2012)
1	Orlando-Kissimmee, FL	583	2.75	1.1	244.28
2	Tampa-St. Petersburg-Clearwater, FL	874	2.97	1.6	190.13
3	Jacksonville, FL	359	2.48	1.4	182.71
4	Miami-Fort Lauderdale-Pompano Beach, FL	1,539	2.58	1.8	145.33
5	Memphis, TN-MS-AR	239	1.72	1.3	131.26
6	Birmingham-Hoover, AL*	148	1.33	1.1	125.60
7	Houston-Sugar Land-Baytown, TX	1,034	1.70	1.4	119.64
8	Atlanta-Sandy Springs-Marietta, GA	839	1.59	1.3	119.35
9	Phoenix-Mesa-Scottsdale, AZ	840	1.86	1.6	118.64
10	Charlotte-Gastonia-Concord, NC-SC	254	1.65	1.5	111.74
11	Detroit-Warren-Livonia, MI	713	1.55	1.4	111.63

Mobility Corridors - targeted mobility, safety and accessibility improvements within 1/4 miles of high frequency transit corridors through corridor screening, analysis, planning and design



Project Schedule

August 2015-February 2016



Public Charrettes/Workshops

Spring 2016



**Final Corridor Planning
Reports & Recommendations**

Summer – Fall 2016



**Advance Prioritized Corridors
into Preliminary Engineering
and Design**

Fall 2016



Begin Implementation

← Continuous coordination with Stakeholders & Agencies →

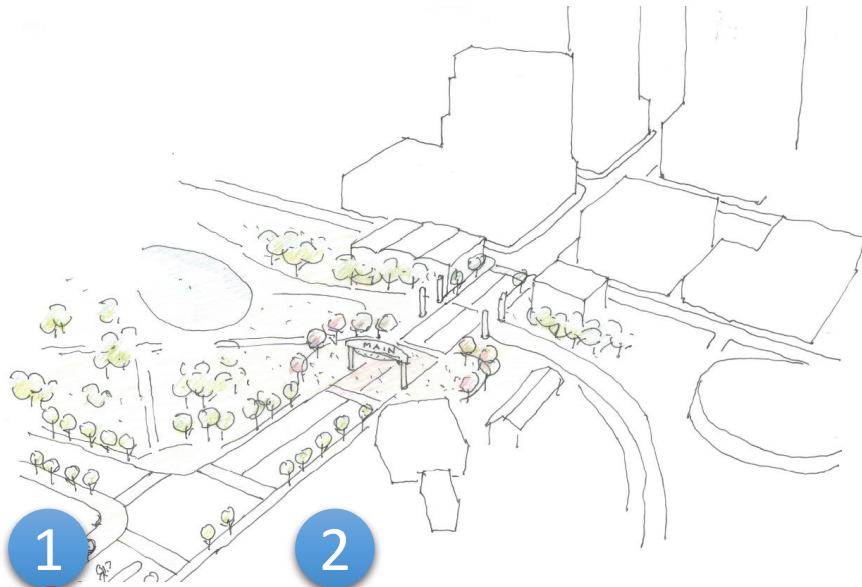
Main Street Focus Areas



1

Hogan's Creek/Parks

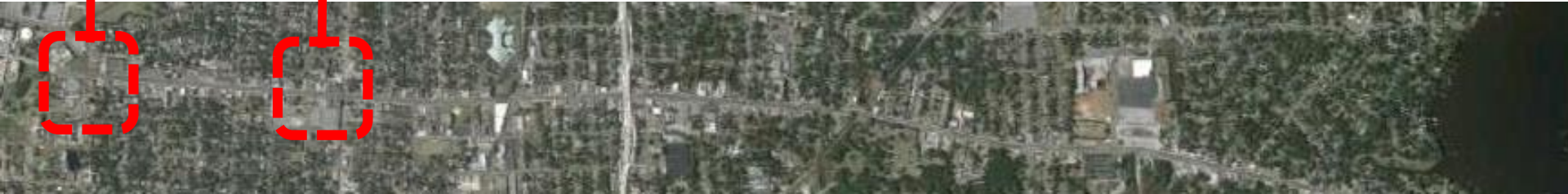
Located between Hogan's Creek and 2nd street



2

Main Street Commercial

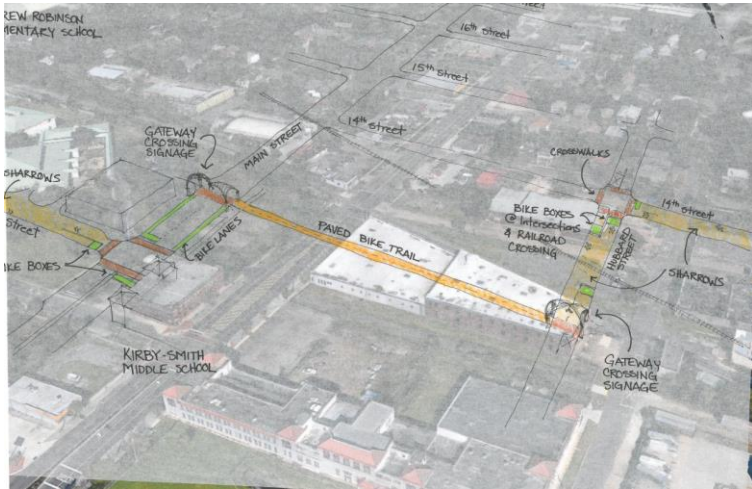
Located between 6th and 9th streets



3

Bike Trail and Parks

Located between 10th and 15th streets



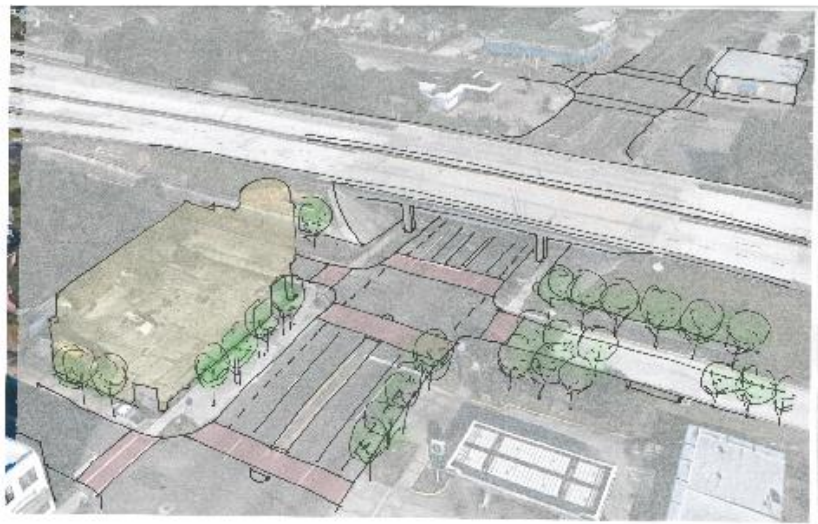
3



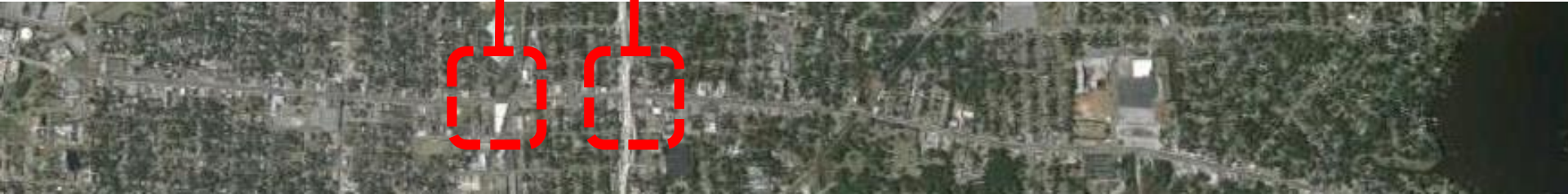
4

MLK Expressway

Located between 19th and 22th streets



4



ENHANCE S-LINE ROUTE

ANDREW ROBINSON
ELEMENTARY SCHOOL

GATEWAY
CROSSING
SIGNAGE

SHARROWS

12th Street

BIKE BOXES

KIRBY-SMITH
MIDDLE SCHOOL

MAIN STREET

BIKE LANES

PAVED BIKE TRAIL

BIKE BOXES
@ Intersections
& RAILROAD
CROSSING

CROSSWALKS

GATEWAY
CROSSING
SIGNAGE

18th Street

17th Street

16th Street

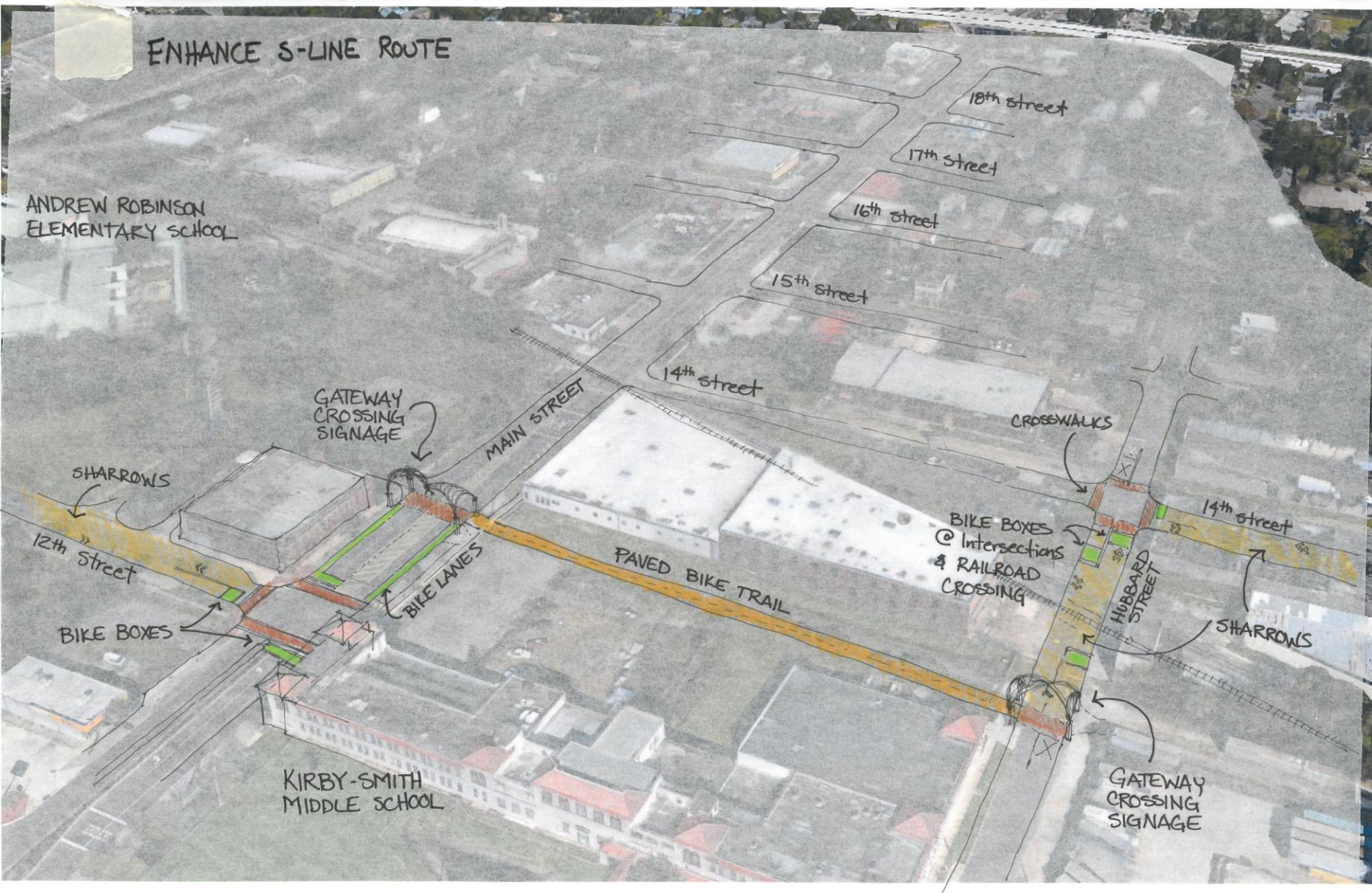
15th Street

14th Street

14th Street

HUBBARD
STREET

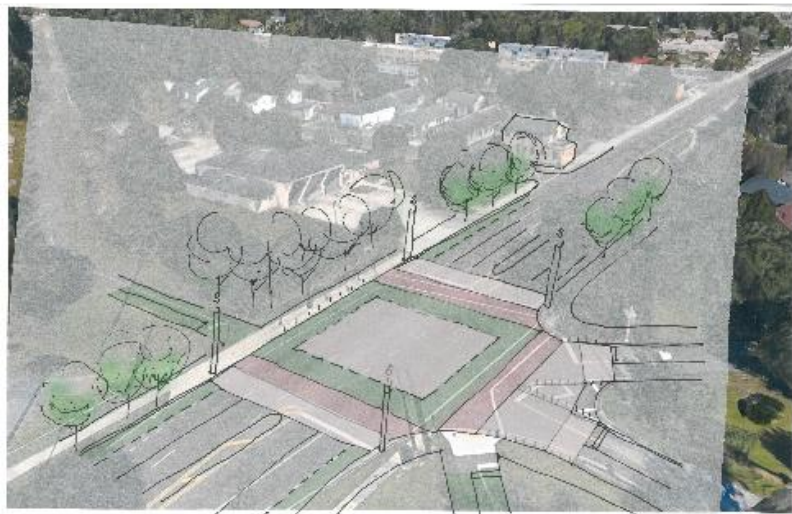
SHARROWS



5

S-Line Bike Trail

Located past 35th St.



6

Redevelopment Opportunity

Located between 45th & 53rd Streets

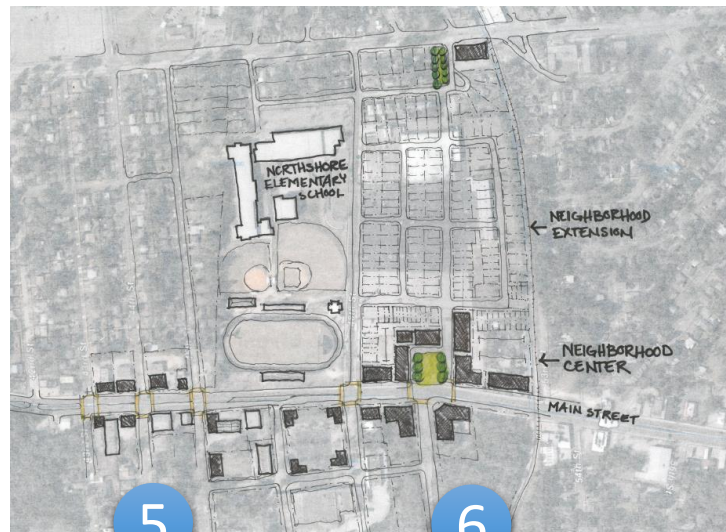
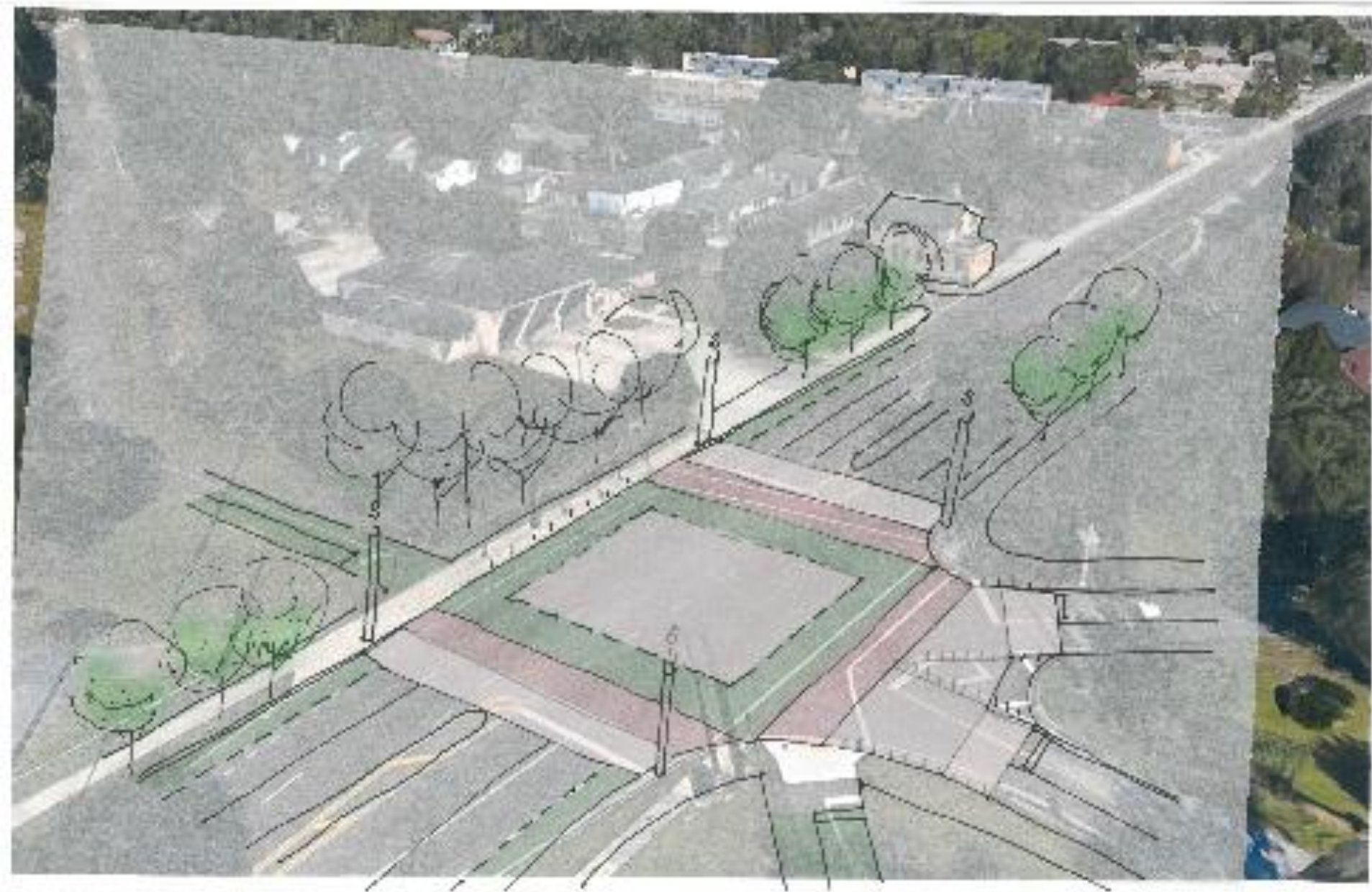




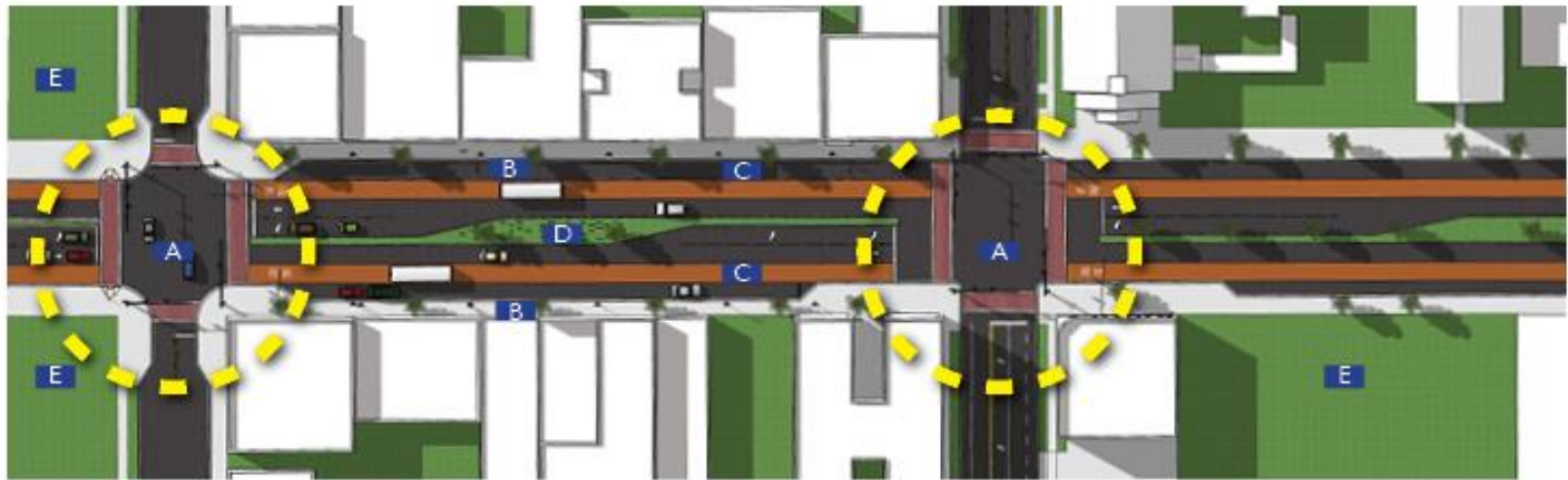
Image Landsat

Google earth



S Line just past 35th

Main Street with Repurposed outside lanes/ Re open the Grid



7th and Main Street: Existing



7th and Main Street: With Grid opened and bike lanes



Located just past Lawton Ave

